

posteriorly, posterolateral angles rounded. Fringe-hairs of wings simple, long. Abdominal bristles sparse, slender, mostly large.

♀ Tube about one half longer than the preceding segment.

Length about  $1\frac{1}{2}$  mill.

Hab: Oahu, Mt. Tantalus, 1500 feet, under bark of dead tree, in numbers and in all stages (F. W. Terry).

**Nesothrips gen. nov.**

Allied somewhat distantly to *Liothrips* Uzel. Flat above, convex below. Strongly chitinized, with a shining, polished surface.

Head dorsally about as long as the pronotum, a little longer than wide, lateral margins subparallel. Antennae about twice as long as head, Ocelli present. Eyes not very prominent laterally. Face long, lateral margins subparallel, then narrowing apically. Pronotum anteriorly as wide as the head, posteriorly distinctly wider, warts absent. Flight-organs absent. Anterior legs unarmed, femora incrassate, more than twice as long as the tibiae.

**1. oahuensis sp. nov.**

Polished, shining, pitchy-blackish; apices of anterior tibiae, the tarsi etc., paler. Face bristles absent. Antennae 5, 5, 9,  $8\frac{1}{2}$ , 8, 6, 8. Two longish bristles (lateral and sublateral) near the posterior margins of at least five tergites.

♀ Tube with 2 terminal bristles.

Length  $1\frac{1}{2}$  mill.

Hab: Oahu, Mt. Tantalus, 1300 feet (O. H. Swezey) probably on flowers.

**On Two New Vitian Chermidae [Hem.]**

By G. W. KIRKALDY.

So far as I am aware, no Vitian Chermidae have yet been described. Mr. F. Muir recently, in collecting and studying leafhoppers and their parasites in that group of Islands, secured two species of the genus *Trioza*.

***Trioza* Foerster.**

**1. vitiensis sp. nov.**

♀. Vertex obscure testaceous with a narrow blackish brown line down the middle and an obscure spot on each side at the base between this line and the ocelli. Frons orange, the middle ocellus pale yellow, ringed with blackish-brown, the others at the posterolateral angles of the vertex and conspicuously orange. Antennae pale yellow. Eyes red brown. Pronotum, dorsulum and mesonotum pitchy, with the following yellowish-feruginous marks; dorsulum with a median and a curved lateral line. Mesonotum with 4 lines, the inner curved inwardly, the outer curved outwardly; scutellum pale with a black median line, abdomen black, genital segment

yellowish. Tegmina and wings hyaline, veins pale fuscous. Legs yellowish brown, femora basally more or less piceous. Vertex flat, transverse, foremargin truncate, mediolongitudinally narrowly sulcate and shallowly pitted on each side nearer the base. Head nearly as wide as thorax, frontal cones rounded apically. Pronotum scarcely as wide as vertex, very short. Dorsulum longer than wide, suboval, narrower than the mesonotum, which is transverse. Scutellum small. Tegmen about  $2\frac{1}{2}$  times as long as wide in form like that of *T. koebelei* Kirkaldy and with similar venation, except that the brachial (lower branch of cubital) forks basal of the middle.

♂ largely orange yellow. Head dorsally yellow cinereous with a line down the middle as in the other sex. Cones bright orange. Nota orange brown, rather feebly lined with fuscous and yellow brown. Tegmina and legs as in the ♀, but the veins of the former yellower. Abdomen ferruginous, last tergite deeply excavated apically, wavily reflexed, the reflexed part creamy; genital segment diamond shaped.

Length to apex of abdomen  $2\frac{1}{2}$  mill.; to apex of tegmina folded  $5\frac{1}{2}$  mill.

Hab. Viti, Rewa (III o6. Muir 1 ♂ 2 ♀ ♀).

## 2. *vanuae* sp. nov.

♀ yellowish, abdomen (except genital segment) black. Head dorsally with a very slender black sulcation, ocelli orange red. Pronotum very transverse, obtuse-angularly emarginate posteriorly, very narrowly margined there with black. Dorsulum about as long as mesonotum and scutellum together, scarcely longer than wide. Tegmina in form like *T. vittensis*, hyaline, veins yellowish fuscous, venation like that of *T. koebelei* but the median (upper branch of cubital) forks close to the apex of the tegmen.

Length  $1\frac{1}{2}$  (to apex of abdomen) and 4 mill. (to apex of tegmina folded.)

Hab: Viti, Rewa, (III o6. Muir, 1 ♀).

## An Extraordinary Leaf-hopper from Mt. Konahuanui, Oahu.

By OTTO H. SWEZEY.

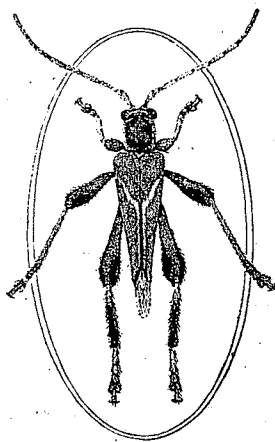
### Dictyophorodelphax gen. nov.

This aberrant genus of Delphacidae is erected for a single species discovered on a southern ridge of Mt. Konahuanui, Oahu, February, 1906. The genus is chiefly distinguished from other genera of Delphacidae by the extremely long, narrow, forward prolongation of the head giving it a superficial resemblance to *Scolops*, or some others of the Dictyophorinae. Its position in Delphacidae is determined by the presence of a movable spur at the apex of posterior tibia.

The prolongation of the head is as long as the rest of the insect. It is narrow and tapers gradually to a blunt apex. It has a median carina ventrally; two lateral carinae, the ventral

**PROCEEDINGS**  
**OF THE**  
**Hawaiian**  
**Entomological Society**

**I**  
**PART 3**



**HONOLULU, JULY 1st, 1907**

**PRICE, 50 Cents**