

## A NEW JUMPING PLANT-LOUSE FROM PEIPING.

(HOMOPTERA, CHERMIDAE)

CHENFU F. WU

(Department of Biology, Yenching University, Peiping)

Family CHERMIDAE

Subfamily PSYLLINAE

Tribe PSYLLINI

Genus *Psylla* Geoffroy

Geoffroy, Histoire Abreege des Insectes, I: 482 (1762).

Scott, Trans. Ent. Soc. London, 1876: 530 (1876).

Loew, Verh. Zool. Bot. Ges. Wien, 29: 600 (1878).

Froggatt, Proc. Linn. Soc. N. S. Wales, 1901: 243 (1901).

Crawford, U. S. Nat. Mus. Bull. 85 (1914)

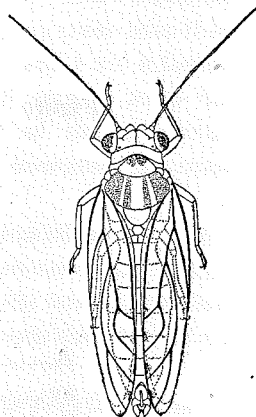
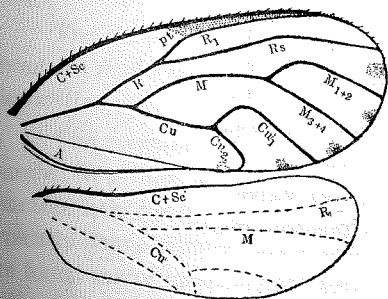
*Psylla willieti* sp. nov.

Length of body; ♂ 3.5 mm.; ♀ 4 mm.; length of forewing 3 mm.; width of head 0.90 mm.; length of vertex 0.20 mm. General color light green throughout, antennae dark brown.

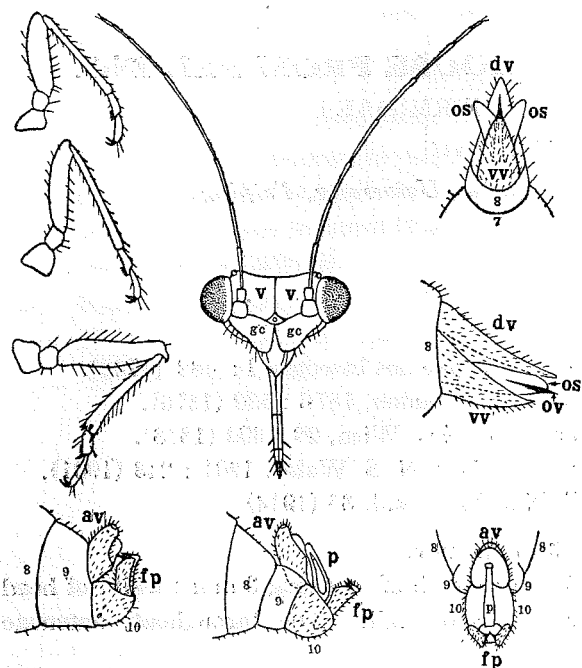
Head short, less than half as long as broad; occipital margin slightly arcuate; vertex glabrous, flat anteriorly, slightly emarginate in front at median line and also over antennal insertions; genal cones about half as long as vertex, conical, pubescent; eyes bulging, ovate, red; ocelli red, small. Antennae long, almost half as long as body, 10 jointed, slender; scape large, pedicel slightly smaller; flagellum slender, slightly tapering; terminal setae short.

Thorax slightly arched, glabrous. Pronotum half as long as prescutum, wider than face. Legs not very stout; hind tibiae about as long as

femora, with several spurs at apex; first tarsal joint, with a pulvillus beneath and two black claw-like spines at tip. Forewings elongate ovate, twice as long as broad, rounded apically; hyaline, with five maculae on outer and inner margins; pterostigma long and narrow; veins provided with a row of minute spinules on each side; second marginal cell slightly wider than the first, smaller.



GENITALIA. MALE: Anal valve slightly longer than forceps, pubescent; forceps simple, with sharp spine at tip; penis tubular and flask-shaped above, with dorsal and ventral



chitinized bars when viewed from the side. **FEMALE:** Genital segment long, as long as the three preceding segments; dorsal valve slightly longer than ventral, both acute; ovipositor sheaths transparent; ovipositor acute, chitinized at tip.

**Food plant:** *Sophora japonica* L. var. *pendula* Loud. (龍爪槐).

**Holotype** ♂; **Allotype**, ♀; July 6, 1932; Haitien, Peiping, China; Yenching University Collection, No. Che. 3.

**Paratypes** 48 ♂, 57 ♀; July 6-20, 1932; same locality; Yenching University Collection

#### Explanation of Figures.

- Figure A. Front view of head.  
 B-D. Fore-leg, Mid-leg and Hind-leg.  
 E. Male genitalia, lateral view.  
 F. Male genitalia, lateral view, with parts extended.  
 G. Male genitalia, dorsal view.  
 H. Female genitalia, lateral view.  
 I. Female genitalia, ventral view.

A.....	Aual vein	ov.....	penis
av.....	anal valve	p.....	pterostigma
C.....	Costal vein	pt.....	Radial vein
Cu.....	Cubital vein	R.....	Radial sector
dv.....	dorsal valve	Rs.....	Subcostal vien
fp.....	forcep	Sc.....	vertex
gc.....	genal cone	v.....	ventral valve
M.....	Median vien	vv.....	ovipositor sheath
os.....	ovipositor		