

# A REVISION OF THE PSYLLIDAE OF TAIWAN

By

SATORU KUWAYAMA

(With 2 Text Figures)

Our knowledge on the fauna of the Psyllidae, or Chermidae, of Taiwan (Formosa) has made a beginning by the works of the late my elder brother, SHIGERU KUWAYAMA. In his two papers, "Die Psylliden Japans, I-II", published in 1908 and 1910, the late KUWAYAMA (21, 22)<sup>1)</sup> described a very great number of genera and species, and enumerated 11 genera and 18 species as occurring in Taiwan, of which 6 genera and 17 species were new to science. In 1910, Prof. C. SASAKI (34) recorded on the life-history of his *Triosa camphorae* of camphor-tree and its injuries, and also reported its distribution in the island just referred to. In 1914, Dr. G. ENDERLEIN (16) published his "Psyllidologica II", which is consisted of the result of his studies on H. SAUTER's collection from Taiwan. He recognized in this material 6 species belonging to different genera respectively, and erected 3 new genera and 4 new species, of which one genus was regarded to the known species. Prof. D. L. CRAWFORD (9) added in 1919 one more species unrecorded to this faunal region, and Mr. R. TAKAHASHI (36) added in 1927 also two species hitherto unrecorded. Owing to these works it may now be recognizable 26 species of the jumping plant-lice, or Psyllids, as inhabiting in Taiwan.

To tread in my brother's footsteps, I have regarded this insect family, both in taxonomic and ecological, for several years with great interest. Mr. R. TAKAHASHI has kindly placed at my disposal some specimens of very interesting Psyllids from Taiwan, and I found in this collection one genus and two species new to science and one species hitherto unknown to this fauna, for which I intended to describe in the present paper. On the other hand, our knowledge of the Psyllid-fauna of the Palaeotropics and the South Pacific Islands has gradually been extended during the past twenty years, through the various works of Prof. CRAWFORD (4-15), Dr. ENDERLEIN (16-19), Prof. UICHANCO (37) and others, especially the former professor furnished many valuable contributions. It consequently necessitates a re-examination regarding the known species of Taiwan. In the following lines I wish to make various comments regarding them. Prof. T. SHIRAKI (35), Mr. M. MAKI (26-28) and the late Mr. I. NITOBE

---

1) Reference is made by number to the literatures listed at the end of this paper.

(31) touched on some species from the economic point of view, and I also try to refer to their works.

At this time, I wish to express my heartiest thanks to Prof. Dr. S. MATSUMURA for his kind advice and help during the course of the present studies. My sincere thanks are also due to Messrs. R. TAKAHASHI and T. UE for their kind sendings of the material upon which this paper is based.

Familia: **Psyllidæ** LATREILLE

Subfamilia 1: **Pauropsyllinæ** CRAWFORD

Genus 1: **Leptynoptera** CRAWFORD

*Leptynoptera* CRAWFORD, Phil. Jour. Sci., Vol. XV, p. 141, 147 (1919).

1. **Leptynoptera sulfurea** CRAWFORD

*Leptynoptera sulfurea* CRAWFORD, Phil. Jour. Sci., Vol. XV, p. 147, Pl. I-Figs. 5, 6 (1919); UICHANCO, Phil. Jour. Sci., Vol. XVIII, p. 271 (1921).

*Leptynoptera sulfurea* var. *rubrocincta* UICHANCO, Phil. Jour. Sci., Vol. XVIII, p. 271, Pl. I-Fig. 4, Pl. III-Fig. 20, Pl. IV-Fig. 38, Pl. V-Fig. 48 (1921); TAKAHASHI, Trans. Nat. Hist. Soc. Formosa, Vol. XVII, p. 152 (1927).

**Habitat:** Karenkô (after TAKAHASHI); Kuraru (31/VIII, 1921, leg. T. ESAKI; 19/XI, 1923, leg. R. TAKAHASHI).

**Distribution:** Taiwan; Philippines; Moluccas.

**Food plant:** *Calophyllum Inophyllum* [Guttiferae].

**Remarks:** L. B. UICHANCO (37) separated the Philippine-form as a distinct variety from the original species of Amboina, Moluccas. According to D. L. CRAWFORD (9), however, the type of the species is a single and partly mutilated example, and the too simple description by him does not enable me satisfactorily to determine the relation between the Philippine and Moluccan forms. Until a more precise description of the Moluccan form is made, I shall have to look upon the difference between these two local forms provisionally as might not necessary for separation. Both L. B. UICHANCO (37) and R. TAKAHASHI (36) observed this insect as a gall-maker on the leaves of *Calophyllum Inophyllum*.

Genus 2: **Pauropsylla** RÜBSAAMEN

*Pauropsylla* RÜBSAAMEN, Ent. Nachricht., Jg. XXV, p. 264 (1899); CRAWFORD, Phil. Jour. Sci., Vol. X, Sec. D, p. 258 (1915); CRAWFORD, Phil. Jour. Sci., Vol. XV, p. 141 (1919).

2. **Pauropsylla nigra** CRAWFORD

*Pauropsylla nigra* CRAWFORD, Phil. Jour. Sci., Vol. XV, p. 142, 143 (1919); RAMAKRISHNA AYYAR, Rec. Ind. Mus., Vol. XXVI, p. 622 (1924).

**Habitat:** Kagi (26/XI, 1923, leg. M. KATÔ).

**Distribution:** Taiwan; India.

**Food Plant:** *Mangifera indica* [Anacardiaceae].

**Remarks:** This species has hitherto not been recorded as occurring in Taiwan. As far as I am aware, only the unique female type from Bihar, Pusa, India was heretofore known. According to M. KATÔ, this insect attacks the mango-tree.

### Genus 3: *Paurocephala* CRAWFORD

*Paurocephala* CRAWFORD, Phil. Jour. Sci., Vol. VIII, Sec. D, p. 298 (1913); CRAWFORD, Phil. Jour. Sci., Vol. XV, p. 141 (1919); CRAWFORD, Ent. News, Vol. XXXI, p. 69 (1920).

*Agonosцена* ENDERLEIN, Ent. Mitteil., Bd. III, p. 234 (1914).

### 3. *Paurocephala bifasciata* sp. nov.

Body dull chocolate-brown to dull black, with dusky yellow stripes and markings dorsad, dusky yellow ventrad; colour varies among individuals, apparently deepening with age. Head deflexed, with rather long yellowish hairs sparsely; vertex broader than long, deeply concave at the occipital margin, with the posterior ocelli greatly elevated, roundly convex in front, four yellowish stripes being arranged; frons swollen beneath the antennal insertions; labrum very large, globose. Eyes large, rounded, prominent, deep crimson-red. Antennae rather short and filiform, nearly one and a half times as long as the width of the head; basal two dull yellow, the remains whitish, excepting terminal three and the apices of 4th, 5th and 7th joints which are dull chocolate-brown.

Thorax broad, somewhat arched, with yellowish hairs sparsely. Pronotum long, with a few yellowish markings; praescutum long, with a yellowish stripe at the middle and a concolorous broad border along the hind margin; mesoscutum large, with four yellowish stripes and each a concolorous round marking on the both sides; mesoscutellum with two yellowish markings. Metascutum with an erect, conical process of about 0.12 mm. in length dorsad. Legs dull yellowish, excepting the apical joint of tarsi, claws and the apical spines of tibia which are dull chocolate-brown. Forewings hyaline, narrowed basally, broadly rounded at the apical margin, about twice as long as broad, pterostigma somewhat opaque; first marginal cell elongate, narrow, about one and a half times as long as pterostigma; second broad; veins dull yellow with dark brownish terminal portions; two broad brownish fasciae from the base of pterostigma to the terminal of  $Cu_2$  and

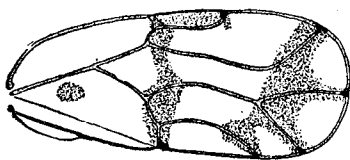


Fig. 1.

*Paurocephala bifasciata* sp. nov.  
Fore-wing, female [ $\times 23$ ]

third narrow, about one and a half times as long as pterostigma; two broad brownish fasciae from the base of pterostigma to the terminal of  $Cu_2$  and

from the terminal of Rs to that of Cu<sub>1</sub>, the latter being extended outwardly along the fork of media; besides these fasciae two brownish markings beyond the cubital petiole and near the outside of pterostigma.

Abdomen long; fifth tergite produced caudad, roughly, reticulately marked dorsad. Male genitalia: dull yellowish with concolorous pubescence densely; anal valve simple, much longer than claspers. Female genitalia: basal half dull yellowish, apical half chocolate-brown, with pubescence rather sparsely, flexed sharply downward, rather long; both plates acute at tip, dorsal longer than ventral.

Length of body, ♂, 1.8–2.0 mm., ♀, 2.1–2.3 mm.; length of fore-wing, ♂, 1.7 mm., ♀, 2.0 mm.

**Habitat:** Taihoku (28/V, 1920, 16/X, 1923, leg. R. TAKAHASHI).

**Distribution:** Taiwan.

**Food Plant:** *Ficus Beecheyana* [Moraceae].

**Remarks:** Described from many specimens, alcoholic co-types, collected by R. TAKAHASHI. This species appears to be very close to *P. psylloptera*, but the markings of fore-wings and other characters justify their separation into a distinct species.

#### 4. *Paurocephala psylloptera* CRAWFORD

*Paurocephala psylloptera* CRAWFORD, Phil. Jour. Sci., Vol. VIII, Sec. D, p. 294, Fig. 1 (1913); CRAWFORD, Phil. Jour. Sci., Vol. X, Sec. D, p. 260 (1915); CRAWFORD, Phil. Jour. Sci., Vol. XV, p. 148, 149 (1919); CRAWFORD, Ent. News, Vol. XXXI, p. 69 (1920); UICHANCO, Phil. Jour. Sci., Vol. XVIII, p. 276 (1921); CRAWFORD, Rec. Ind. Mus., Vol. XXVI, p. 615 (1924); RAMAKRISHNA, AYYAR, Rec. Ind. Mus., Vol. XXVI, p. 621 (1924).

*Agonosceua Sauteri* ENDERLEIN, Ent. Mitteil., Bd. III, p. 234, Fig. 2 (1914).

*Paurocephala sauteri* KUWAYAMA, Jr., Ins. World, Vol. XXVI, p. 368 (1922).

*Psylla* sp. SHIRAKI, Sp. Rep. Agr. Exp. Sta., Gov. Formosa, No. VIII, p. 135 (1913); MAKI, Rep. Injur. Ins. of Mulberry-tree in Formosa, p. 65, Figs. 7–9, Pl. V (1916).

**Habitat:** Chipun (after ENDERLEIN); Taihoku (25/X, 1920, 9/X, 1923, leg. R. TAKAHASHI).

**Distribution:** Taiwan; Philippines; Tenimber Is.; Moluccas; Borneo; Ceylon; S. India.

**Food Plant:** *Morus* spp. [Moraceae].

**Remarks:** It would appear to be a widely distributed species in the Asiatic tropics and the South Pacific Islands. *Psylla* sp., which is reported by T. SHIRAKI (35) and M. MAKI (28) as one of the most serious pests to the mulberry-tree in Taiwan, is apparently identical with *Paurocephala psylloptera*. However, it is noticeable that the mulberry-tree is only known at present as the food-plant in Taiwan, while the hitherto known food-plant in the Philippine Islands is *Ficus ulmifolia* and those in Ceylon are *F. hispida* and *F. asperima*.

Subfamilia 2: **Carsidarinae** CRAWFORDGenus 4: ***Togepsylla*** novum

Body somewhat slender; head not cleft in front, nearly as broad as thorax; vertex more or less quadrate, with the anterior ocellus at the front end of head; genae not swollen into cones, wholly covering frons; labrum small; beak with a moderate length; eyes hemispherical; antennae slender, but not longer than the body.

Thorax not arched; legs rather slender; hind coxal spurs very short, hind tibia with a series of spines at apex, and basal tarsus of hind leg with one spine at apex. Fore-wings large, elongate, narrowed basally, rounded apically; pterostigma wanting; both marginal cells very large. Abdomen rather long.

More striking features are apparently two-jointed long setae on head and thorax dorsad and long setae on the margins and veins of the fore-wing.

**Type of genus:** *Togepsylla takahashii* sp. nov.

The position of this genus is somewhat doubtful, since it resembles the members of the Pauropsyllinae in the character of coxal spur and in some other respects, but differing from this subfamily in a slender body, unarched thorax and in some head characters. From these it is suggestive to let it belong to the Carsidarinae.

**5. *Togepsylla takahashii* sp. nov.**

Head and thorax uniformly pale brownish yellow; abdomen yellowish white, probably greenish in life. Head somewhat quadrate; vertex broader than long, nearly straight at the occipital margin, slightly concave in front, with the frontal ocellus conspicuously elevated. Eyes large, brownish in colour. Between eyes and on the vertex with each a pair of long yellowish brown setae, at the base being approached; the setae about 0.12 mm. in length, the basal part being thick and relatively short and the apical part slender; near to the inner sides of eyes and behind them also located a seta of the same character respectively, the former being about 0.16 mm. in length. Antennae about as long as head and thorax; basal two thick and short, the 3rd longest, being gradually shortened towards the terminal joint; light yellow, excepting terminal two and the apices of the 3rd to 8th, which are brownish.

Thorax rather long; pronotum quadrate, with eight long setae, two long pairs being seen from sides, one on the centre, the remains short and located between the central and lateral setae. Praescutum small, with a pair of setae; metascutum large, with five pairs of setae, the lateral one being the longest; meso-

scutellum with a pair of setae. Legs slender, yellowish, slightly darkened at the apical joint of tarsi. Fore-wings hyaline, elongate, narrowed basally, broadest

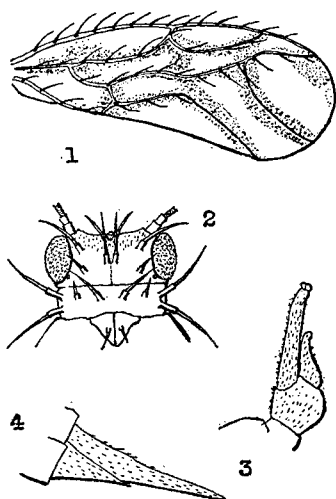


Fig. 2.

*Togetysylla takahashii* sp. nov.

1. Fore-wing, male [ $\times 29$ ]
2. Head and prothorax, dorsal aspect [much enlarged]
3. Male genitalia, lateral aspect [much enlarged]
4. Female genitalia, lateral aspect [much enlarged]

subapically, broadly rounded at the apical margin, about two and a half times as long as broad, slightly brownish along the light yellowish veins; many curved setae of about 0.16 mm. on the anterior margin and veins, excepting  $M_{3+4}$ ,  $Cu_2$  and the apical half of  $Cu_1$ , as shown in the text figure, the base of setae being brownish; radial sector rather short, curved posteriorly; principal basal vein and cubital petiole short, about equal in length;  $Cu_2$  very short,  $Cu_1$  very long and curved, thus forming a very elongate 1st marginal cell; 2nd marginal cell large.

Abdomen long. Male genitalia: anal valve very long and slender, as twice as the claspers, terminated with valvule; claspers provided with a series of dentation on the inner margins. Female genitalia: very long and slender, as long as the rest of abdomen, narrow and acute at the tip, dorsal much longer than ventral.

Length of body,  $\delta$ , 1.6–1.8 mm.,  $\eta$ , 1.6–2.0 mm.; length of fore-wing,  $\delta$ , 1.5 mm.,  $\eta$ , 1.8 mm.

**Habitat:** Urai (4/I, 1921, leg. R. TAKAHASHI).

**Distribution:** Taiwan.

**Remarks:** Described from 3 male and 3 female specimens (alcoholic co-types). This interesting species is named in honor of the collector, Mr. R. TAKAHASHI, who has done much contribution towards making known the Psyllid-fauna of Taiwan.

## Genus 5: *Dynopsylla* CRAWFORD

*Dynopsylla* CRAWFORD, Phil. Jour. Sci., Vol. VIII, Sec. D, p. 295 (1913); CRAWFORD, Phil. Jour. Sci., Vol. XV, p. 156 (1919); ENDERLEIN, Zool. Anz., Bd. LII, p. 119 (1921); CRAWFORD, Rec. Ind. Mus., Vol. XXVI, p. 618 (1924).

*Sphingocladia* ENDERLEIN, Ent. Mitteil., Bd. III, p. 231 (1914); ENDELEIN, Zool. Jahrb., Bd. XLI, Syst., p. 482, Fig. B. (1918); ENDERLEIN, Ent. Mitteil., Bd. XV, p. 397, 399 (1926).

## 6. *Dynopsylla pinnativena* ENDERLEIN

*Sphingocladia pinnativena* ENDERLEIN, Ent. Mitteil., Bd. III, p. 231 (1914); ENDERLEIN, Zool.

Jahrb., Bd. XLI, Syst., p. 482, Fig. B (1918).

*Dynopsylla pinnatifida* ENDERLEIN, Zool. Anz., Bd. LII, p. 119 (1921); KUWAYAMA, Jr., Ins. World, Vol. XXVI, p. 368 (1922); CRAWFORD, Rec. Ind. Mus., Vol. XXVI, p. 619 (1924).

**Habitat:** Taihorinsho (after ENDERLEIN).

**Distribution:** Taiwan.

#### Genus 6: *Mesohomotoma* KUWAYAMA

*Mesohomotoma* KUWAYAMA, Trans. Sapporo Nat. Hist. Soc., Vol. II, p. 180 (1908); CRAWFORD, Pomona Coll. Jour. Ent., Vol. III, p. 483 (1911); ENDERLEIN, Zool. Anz., Bd. LII, p. 119 (1921); CRAWFORD, Proc. Hawaii. Ent. Soc., Vol. VI, p. 33 (1925).

*Udamostigma* ENDERLEIN, Wissensch. Ergeb. d. Schw. Zool. Exped. Kilimandjaro, Deutsch-Ostafrikas, 1905-1906, Hemipt. (Psyllid.), p. 138 (1910).

#### 7. *Mesohomotoma camphorae* KUWAYAMA

*Mesohomotoma Camphorae* KUWAYAMA, Trans. Sapporo Nat. Hist. Soc., Vol. II, p. 181, Pl. III-Figs. 15, 20 (1908); CRAWFORD, Pomona Coll. Jour. Ent., Vol. III, p. 491 (1911); OSHANIN, Katal. Palaearkt. Hemipt., p. 128 (1912); AULMANN, Psyllid. Cat., p. 36 (1913); MATSUMURA, Appl. Ent., Vol. I, p. 373, Pl. XIV-Fig. 5 (1917); MATSUMURA, Manual Injur. Ins. Jap., Vol. I, p. 255, Pl. VIII-Fig. 5 (1920); KUWAYAMA, Jr., Ins. World, Vol. XXVI, p. 368 (1922); CRAWFORD, Proc. Hawaii. Ent. Soc., Vol. VI, p. 33 (1925); CRAWFORD, Ins. Samoa, Pt. II, p. 31 (1927).

**Habitat:** Horisha (after KUWAYAMA); Tansui (29/X, 1923, leg. R. TAKAHASHI).

**Distribution:** Taiwan; Ogasawara; Samoan Is.; Fiji Is.

**Food Plants:** *Hibiscus tiliaceus* [Malvaceae]; *Cinnamomum Camphora* [Lauraceae].

**Remarks:** The co-type specimens were taken on the camphor-tree, but the specimens before me were taken on the foliage of "Yama-asa" (*Hibiscus tiliaceus*). D. L. CRAWFORD (15) also reported that this species in the Fiji Island was found on the foliage of the milo-tree which is somewhat related to *Hibiscus*.

#### 8. *Mesohomotoma lineaticollis* ENDERLEIN

*Mesohomotoma lineaticollis* ENDERLEIN, Ent. Mitteil., Bd. III, p. 232 (1914); KUWAYAMA, Jr., Ins. World, Vol. XXVI, p. 368 (1922); CRAWFORD, Proc. Hawaii. Ent. Soc., Vol. VI, p. 33, 35 (1925); TAKAHASHI, Trans. Nat. Hist. Soc. Formosa, Vol. XVII, p. 152, 4 figs. (1927).

**Habitat:** Taihorin (after ENDERLEIN); Taihoku (23/IX, 1920, 3/XI, 1923, leg. R. TAKAHASHI), Shirin (27/VI, 1919, leg. R. TAKAHASHI).

**Distribution:** Taiwan.

**Food Plant:** *Urena lobata* var. *tomentosa* [Malvaceae].

**Remarks:** This species is apparently very close to *M. camphorae*, differing only in some minor characters such as the body-colour, venation of the forewing, etc. However, I am not hoping to make any alteration in this work.

Genus 7: *Homotoma* GUÉRIN

*Homotoma* GUÉRIN, Iconogr. d. règn. anim., p. 376 (1844); F. LÖW, Verh. Zool. Bot. Ges. Wien, Vol. XXVIII, p. 607 (1878); CRAWFORD, Pomona Coll. Jour. Ent., Vol. III, p. 483 (1911); CRAWFORD, Phil. Jour. Sci., Vol. X, Sec. D, p. 262 (1915); CRAWFORD, Phil. Jour. Sci., Vol. XV, p. 161 (1919).

*Anisostrophia* FÖRSTER, Verh. d. Naturh. Ver. d. preuss. Rheinl., Vol. III, p. 92 (1848).

*Psausia* ENDERLEIN, Ent. Mitteil., Vol. III, p. 232 (1914); ENDERLEIN, Zool. Anz., Bd. LII, p. 120 (1921).

ENDERLEIN (16) erected the genus *Psausia* adopting *Homotoma radiatum* as the genotype. According to his description and figure, one of the distinct characters is unfurcation of the cubitus. However, the cubitus of the forewing is always furcated in the co-type specimens, as figured by the late KUWAYAMA (21), and also in many specimens before me from Kyushu. So far as my studies go, it may be satisfactory to group *Psausia* ENDERLEIN together in *Homotoma* GUÉRIN.

9. *Homotoma radiatum* KUWAYAMA

*Homotoma radiatum* KUWAYAMA, Trans. Sapporo Nat. Hist. Soc., Vol. II, p. 181, Pl. III-Fig. 14 (1908); CRAWFORD, Pomona Coll. Jour. Ent., Vol. III, p. 491 (1911); AULMANN, Psyllid. Cat., p. 36 (1913); CRAWFORD, Phil. Jour. Sci., Vol. XV, p. 162 (1919).

*Psausia radiata* ENDERLEIN, Ent. Mitteil., Bd. III, p. 232, Fig. 1 (1914); KUWAYAMA, Jr., Ins. World, Vol. XXVI, p. 368 (1922).

**Habitat:** Horisha (after KUWAYAMA).

**Distribution:** Taiwan; Kyushu.

**Food Plant:** *Ficus erecta* [Moraceae].

**Remarks:** Recently T. UE observed at Yasaka, Province of Bungo, Kyushu, this species on the young shoots of *Ficus erecta*, and kindly sent to me some fine specimens.

Genus 8: *Tenaphalara* KUWAYAMA

*Tenaphalara* KUWAYAMA, Trans. Sapporo Nat. Hist. Soc., Vol. II, p. 155 (1908); CRAWFORD, Pomona Coll. Jour. Ent., Vol. III, p. 483 (1911); CRAWFORD, Phil. Jour. Sci., Vol. XV, p. 163 (1919).

*Stroglylocephala* CRAWFORD, Phil. Jour. Sci., Vol. XII, Sec. D, p. 166 (1917).

10. *Tenaphalara acutipennis* KUWAYAMA

*Tenaphalara acutipennis* KUWAYAMA, Trans. Sapporo Nat. Hist. Soc., Vol. II, p. 156, Pl. III-Figs. 5, 11 a. b (1908); CRAWFORD, Pomona Coll. Jour. Ent., Vol. III, p. 491 (1911); AULMANN, Psyllid. Cat., p. 75 (1913); CRAWFORD, Phil. Jour. Sci., Vol. XV, p. 163, 164 (1919); KUWAYAMA, Jr., Ins. World, Vol. XXVI, p. 368 (1922); RAMAKRISHNA AYYAR, Rec. Ind. Mus., Vol. XXVI, p. 623 (1924).



*Tenaphalara elongata* CRAWFORD, Rec. Ind. Mus., Vol. VII, p. 432, Pl. XXXIV-Figs. M. N. P. Q, Pl. XXXV-Fig. O (1912).

**Habitat:** "Formosa" (after KUWAYAMA).

**Distribution:** Taiwan; Philippines; India.

**Remarks:** The food plant of this widely distributed species is not yet known in Taiwan. According to D. L. CRAWFORD (*op.*), however, it is found on "silk cotton" in India and on *Sterculia foetida* [Sterculiaceae] in the Philippines.

#### Genus 9: *Macrohomotoma* KUWAYAMA

*Macrohomotoma* KUWAYAMA, Trans. Sapporo Nat. Hist. Soc., Vol. II, p. 179 (1908); CRAWFORD, Pomona Coll. Jour. Ent., Vol. III, p. 483 (1911); ENDERLEIN, Ent. Mitteil., Bd. III, p. 233 (1914); CRAWFORD, Phil. Jour. Sci., Vol. XV, p. 157 (1919); ENDERLEIN, Zool. Anz., Bd. LII, p. 119 (1921); CRAWFORD, Proc. Hawaii. Ent. Soc., Vol. VI, p. 36 (1925).

#### 11. *Macrohomotoma gladiatum* KUWAYAMA

*Macrohomotoma gladiatum* KUWAYAMA, Trans. Sapporo Nat. Hist. Soc., Vol. II, p. 180, Pl. III-Fig. 13 (1908); CRAWFORD, Pomona Coll. Jour. Ent., Vol. III, p. 490 (1911); AULMANN, Psyllid. Cat., p. 36 (1913); ENDERLEIN, Ent. Mitteil., Bd. III, p. 233 (1914); MAKI, Ins. World, Vol. XIX, p. 267 Pls. XIII-XIV (1915); MAKI, Sp. Rep. Forest. Exp. Sta., Gov. Formosa, No. I, p. 37, Pl. VIII-Figs. 5, 6 (1915); KUWAYAMA, Jr., Ins. World, Vol. XXVI, p. 368 (1922); CRAWFORD, Proc. Hawaii. Ent. Soc., Vol. VI, p. 37 (1925).

**Habitat:** Arisan (after KUWAYAMA), Ako (after MAKI), Tainan (after ENDERLEIN), Kôheki (III, 1921, leg. R. TAKAHASHI).

**Distribution:** Taiwan.

**Food Plant:** *Ficus retusa* [Moraceae].

**Remarks:** According to M. MAKI (26, 27), this species is common in the level ground of Taiwan, being much more in the southern part, and produces malformation on the young shoots of *Ficus retusa*, sometimes causing serious ravages.

#### Subfamilia 3: *Psyllinae* F. Löw

#### Genus 10: *Diaphorina* F. Löw

*Diaphora* F. Löw, Verh. Zool. Bot. Ges. Wien, Bd. XXVIII, p. 603 (1878) [nom. praeocc.].

*Diaphorina* F. Löw, Verh. Zool. Bot. Ges. Wien, Bd. XXIX, p. 567 (1879); F. Löw, Verh. Zool. Bot. Ges. Wien, Bd. XXX, p. 257 (1880); CRAWFORD, Rec. Ind. Mus., Vol. XXVI, p. 615 (1924).

#### 12. *Diaphorina citri* KUWAYAMA

*Diaphorina citri* KUWAYAMA, Trans. Sapporo Nat. Hist. Soc., Vol. II, p. 160, Pl. III-Fig. 16

(1908); SHIRAKI, Sp. Rep. Agr. Exp. Sta., Gov. Formosa, No. VIII, p. 132 (1913); AULMANN, Psyllid. Cat., p. 7 (1913); NITOBE, Rep. Injur. Ins. of Citrus-tree, p. 71, 1 fig. (1916); MATSUMURA, Appl. Ent., Vol. I, p. 373, Pl. XIV-Fig. 4 (1917); MATSUMURA, Manual Injur. Ins. Jap., Vol. I, p. 254, Pl. VIII-Fig. 4 (1920); CRAWFORD, Rec. Ind. Mus., Vol. XXVI, p. 616 (1924); RAMAKRISHNA AYYAR, Rec. Ind. Mus., Vol. XXVI, p. 623 (1924); HUSAIN & NATH, Mem. Dept. Agr. India, Ent. Ser., Vol. X, No. 2, Pls. I-IV, 3 figs. (1927).

*Euphalerus citri* CRAWFORD, Rec. Ind. Mus., Vol. VII, p. 424, 431, Pl. XXXIII-Figs. N, O, P, Pl. XXXV-Fig. D (1912); CRAWFORD, Phil. Jour. Sci., Vol. VIII, Sec. D, p. 299 (1913); MAKI, Sp. Rep. Forest. Exp. Sta., Gov. Formosa, No. 1, p. 37, Pl. VIII-Figs. 3, 4 (1915); CRAWFORD, Phil. Jour. Sci., Vol. XII, Sec. D, p. 168 (1917); CRAWFORD, Phil. Jour. Sci., Vol. XV, p. 163, 171 (1919); KUWAYAMA, Jr., Engai, Vol. XIII, No. 1, p. 31 (1921); KUWAYAMA, Jr., Ins. World, Vol. XXVI, p. 368 (1922).

**Habitat:** Shinchiku (after KUWAYAMA), Taihoku (30/IX, 13/VI, 1920, leg. R. TAKAHASHI).

**Distribution:** Taiwan; Philippines; Moluccas; Java; Malay; S. China; India.

**Food Plants:** *Citrus* spp., *Murraya paniculata* [Rutaceae].

**Remarks:** This species is widely distributed and very common throughout the southern portion of the Eastern Hemisphere, and is known as one of the most serious pests to the citrus culture. T. SHIRAKI (35) and I. NITOBE (31) observed on the ecology of this species in Taiwan, and recently M. A. HUSAIN and D. NATH (20) reported on the result of their detailed observations in India. According to T. V. RAMAKRISHNA AYYAR (32), this species was found also on the shoots of *Murraya koenigii* in the South India, and this plant is considered as an alternative food-plant. M. MAKI (27) also enumerated *M. paniculata* as one of the food-plants in Taiwan. The food-plants of this species are apparently limited to the Rutaceae.

### Genus 11: *Epipsylla* KUWAYAMA

*Epipsylla* KUWAYAMA, Trans. Sapporo Nat. Hist. Soc., Vol. II, p. 178 (1908); CRAWFORD, Phil. Jour. Sci., Vol. XV, p. 168, 177 (1919).

#### 13. *Epipsylla albolineata* KUWAYAMA

*Epipsylla albolineata* KUWAYAMA, Trans. Sapporo Nat. Hist. Soc., Vol. II, p. 178, Pl. III-Fig. 19 (1908); AULMANN, Psyllid. Cat., p. 7 (1913); CRAWFORD, Phil. Jour. Sci., Vol. XV, p. 177 (1919); KUWAYAMA, Jr., Ins. World, Vol. XXVI, p. 369 (1922).

**Habitat:** Arisan (after KUWAYAMA); Taihoku (29/V, 1920, leg. R. TAKAHASHI).

**Distribution:** Taiwan.

**Food Plant:** *Mucuna subferruginea* [Leguminosae].

**Remarks:** On sending the specimens, R. TAKAHASHI communicated that this insect occurs on *Mucuna subferruginea* [Leguminosae].

**14. *Epipsylla rubrofasciata* KUWAYAMA**

*Epipsylla rubrofasciata* KUWAYAMA, Trans. Sapporo Nat. Hist. Soc., Vol. II, p. 179 (1908); AULMANN, Psyllid. Cat., p. 7 (1913); CRAWFORD, Phil. Jour. Sci., Vol. XV, p. 178 (1919); KUWAYAMA, Jr., Ins. World, Vol. XXVI, p. 369 (1922).

**Habitat:** Koshun (after KUWAYAMA), Arisan (after KUWAYAMA).

**Distribution:** Taiwan.

**Genus 12: *Metapsylla* KUWAYAMA**

*Metapsylla* KUWAYAMA, Trans. Sapporo Nat. Hist. Soc., Vol. II, p. 157 (1908); CRAWFORD, Phil. Jour. Sci., Vol. XV, p. 169 (1919).

**15. *Metapsylla marginata* KUWAYAMA**

*Metapsylla marginata* KUWAYAMA, Trans. Sapporo Nat. Hist. Soc., Vol. II, p. 158 (1908); AULMANN, Psyllid. Cat., p. 7 (1913); KUWAYAMA, Jr., Ins. World, Vol. XXVI, p. 371 (1922).

**Habitat:** Koshun (after KUWAYAMA).

**Distribution:** Taiwan.

**Genus 13: *Psylla* GEOFFROY**

*Psylla* GEOFFROY, Hist. abr. Ins. envir. Paris, Tom. I, p. 482 (1762); FÖRSTER, Verh. d. naturh. Ver. d. preuss. Rheinl., Vol. III, p. 67 (1848); FLOR, Rhynch. Livl., Bd., II, p. 446 (1861); F. Löw, Verh. Zool. Bot. Ges. Wien, Vol. XXVIII, p. 600 (1878); FROGGATT, Proc. Linn. Soc. N. S. Wales., 1901, p. 243 (1901); CRAWFORD, U. S. Nat. Mus., Bul. 85, p. 135 (1914); CRAWFORD, Phil. Jour. Sci., Vol. XV, p. 178 (1919).

**16. *Psylla spadica* KUWAYAMA**

*Psylla spadica* KUWAYAMA, Trans. Sapporo Nat. Hist. Soc., Vol. II, p. 165 (1908); AULMANN, Psyllid. Cat., p. 27 (1913); CRAWFORD, Phil. Jour. Sci., Vol. XV, p. 180 (1919); KUWAYAMA, Jr., Ins. World, Vol. XXVI, p. 371 (1922).

**Habitat:** Arisan (after KUWAYAMA).

**Distribution:** Taiwan.

**17. *Psylla arisana* KUWAYAMA**

*Psylla arisana* KUWAYAMA, Trans. Sapporo Nat. Hist. Soc., Vol. II, p. 168 (1908); AULMANN, Psyllid. Cat., p. 11. (1913); CRAWFORD, Phil. Jour. Sci., Vol. XV, p. 179 (1919); KUWAYAMA, Jr., Ins. World, Vol. XXVI, p. 369 (1922).

**Habitat:** Arisan (after KUWAYAMA).

**Distribution:** Taiwan.

**18. *Psylla coccinea* KUWAYAMA**

*Psylla coccinea* KUWAYAMA, Trans. Sapporo Nat. Hist. Soc., Vol. II, p. 171 (1908); OSHANIN, Katal. palaearkt. Hemipt., p. 127 (1912); AULMANN, Psyllid. Cat., p. 14 (1913); CRAWFORD, Phil. Jour. Sci., Vol. XV, p. 178 (1919); KUWAYAMA, Jr., Ins. World, Vol. XXVI, p. 369 (1922).

**Habitat:** "Formosa" (after CRAWFORD).

**Distribution:** Taiwan; Kyushu, Honshu, Hokkaido.

**Food Plant:** *Akebia quinata* [Lardizabalaceae].

**Remarks:** This species is widely distributed throughout Japan proper, and is found on *Akebia quinata*. Unfortunately, I have not yet examined any specimens of this species from Taiwan personally.

### 19. *Psylla toroensis* KUWAYAMA

*Psylla toroensis* KUWAYAMA, Trans. Sapporo Nat. Hist. Soc., Vol. II, p. 172 (1908); AULMANN, Psyllid. Cat., p. 28 (1913); CRAWFORD, Phil. Jour. Sci., Vol. XV, p. 180 (1919); KUWAYAMA, Jr., Ins. World, Vol. XXVI, p. 371 (1922).

**Habitat:** Torocen (after KUWAYAMA).

**Distribution:** Taiwan.

### 20. *Psylla kiushuensis* KUWAYAMA

*Psylla kiushuensis* KUWAYAMA, Trans. Sapporo Nat. Hist. Soc., Vol. II, p. 174 (1908); OSHANIN, Katal. palaearkt. Hemipt., p. 128 (1912); AULMANN, Psyllid. Cat., p. 18 (1913); CRAWFORD, Phil. Jour. Sci., Vol. XV, p. 179 (1919); KUWAYAMA, Jr., Ins. World, Vol. XXVI, p. 370 (1922).

**Habitat:** "Formosa" (after KUWAYAMA).

**Distribution:** Taiwan; Kyushu.

### 21. *Psylla kuwayamai* CRAWFORD

*Psylla tripunctata* KUWAYAMA, Trans. Sapporo Nat. Hist. Soc., Vol. II, p. 174 (1908) [nom. praecoc.]; AULMANN, Psyllid. Cat., p. 28 (1913); CRAWFORD, Phil. Jour. Sci., Vol. XV, p. 180 (1919); KUWAYAMA, Jr., Ins. World, Vol. XXVI, p. 371 (1922).

*Psylla kuwayamai* CRAWFORD, Pomona Coll. Jour. Ent., Vol. III, p. 430 (1911); CRAWFORD, Ent. News, Vol. XXXI, p. 70 (1920).

**Habitat:** "Formosa" (after KUWAYAMA).

**Distribution:** Taiwan.

## Subfamilia 4: **Triozinae** F. Löw

### Genus 14; **Triozia** FÖRSTER

*Triozia* FÖRSTER, Verh. d. naturh. Ver. d. Preuss. Rheinl., Vol. III, p. 67 (1848); FLOR, Rhynch. Livl., Bd. II, p. 484 (1861); F. LÖW, Verh. Zool. Bot. Ges. Wien, Vol. XXVIII, p. 609 (1878); FROGGATT, Proc. Linn. Soc. N. S. Wales, 1901, p. 273 (1901); CRAWFORD, Pomona Coll. Jour. Ent., Vol. III, p. 423 (1911); CRAWFORD, U. S. Nat. Mus., Bul. 85, p. 74 (1914); CRAWFORD, Phil. Jour. Sci., Vol. XV, p. 185, 186 (1919).

*Spanioza* ENDERLEIN, Ent. Mitteil., Bd. XV, p. 400 (1926).

### 22. *Triozia brevifrons* KUWAYAMA

*Triozia brevifrons* KUWAYAMA, Trans. Sapporo Nat. Hist. Soc., Vol. III, p. 61 (1910); AULMANN, Psyllid. Cat., p. 40 (1913); CRAWFORD, Phil. Jour. Sci., Vol. XV, p. 188 (1919); KUWAYAMA, Jr., Ins. World, Vol. XXVI, p. 372 (1922).

**Habitat:** "Formosa" (after KUWAYAMA).

**Distribution:** Taiwan.

### 23. *Trioza camphorae* SASAKI

*Trioza camphorae* SASAKI, "First Rep. Injur. Ins. of Camphor-tree, p. 1 (1905)"; SASAKI, Second Rep. Injur. Ins. of Camphor-tree, p. 1 (1907); SASAKI, "Nip. Konch. Kwai Ho, Vol. II, p. 131 (1908)"; SASAKI, Jour. Coll. Agr., Imp. Univ. Tokyo, Vol. II, p. 278, Pls. XV-XVI (1910); AULMANN, Psyllid. Cat., p. 40 (1913); MAKI, Sp. Rep. Forest. Exp. Sta., Gov. Formosa, No. 1, p. 36, Pl. VIII-Figs. 1, 2 (1915); KUWAYAMA, Jr., Ins. World, Vol. XXVI, p. 372 (1922).

*Kuwayama (Epitrioza) camphorae* MATSUMURA, Appl. Ent., Vol. I, p. 374, Pl. XIV-Fig. 7 (1917); MATSUMURA, Manual Injur. Ins. Jap., Vol. I, p. 256, Pl. VIII-Fig. 6 (1920).

**Habitat:** "Formosa" (after SASAKI).

**Distribution:** Taiwan; Kyushu, Shikoku, Honshu; S. China.

**Food Plant:** *Cinnamomum Camphora* [Lauraceae].

**Remarks:** This species is widely distributed in the southern part of Japan and South China. According to C. SASAKI (33, 34), although the younger as well as the older camphor-trees are liable to be infested by this insect, the injuries are more serious for the younger trees less than ten years old, forming large numbers of oval or roundish galls on the surface of leaves.

### 24. *Trioza formosana* KUWAYAMA

*Trioza formosana* KUWAYAMA, Trans. Sapporo Nat. Hist. Soc., Vol. III, p. 58, Pl. II-Fig. 6 (1910); AULMANN, Psyllid. Cat., p. 46 (1913); CRAWFORD, Phil. Jour. Sci., Vol. XV, p. 188 (1919); KUWAYAMA, Jr., Ins. World, Vol. XXVI, p. 372 (1922).

**Habitat:** "Formosa" (after KUWAYAMA).

**Distribution:** Taiwan.

### 25. *Trioza galii* FÖRSTER.

*Trioza Galii* FÖRSTER, Verh. naturh. Ver. preuss. Rheinl., Vol. III, p. 87 (1848); FLOR, Rhynch. Livl., Bd. II, p. 511 (1861); OSHANIN, Ann. Mus. Zool. Acad. Imp. Sci., Bd. XII, p. 372 (1907); KUWAYAMA, Trans. Sapporo Nat. Hist. Soc., Vol. III, p. 57 (1910); SULC, Sitzber. d. Kön. böhm. Ges. d. Wiss. Prag, II. Classe, XVII, p. 16, Tab. V (1910); OSHANIN, Katal. palaearkt. Hemipt., p. 129; (1912); CRAWFORD, Phil. Jour. Sci., Vol. XV, p. 188 (1919); KUWAYAMA, Jr., Ins. World, Vol. XXVI, p. 372 (1922).

*Spanioza galii* ENDERLEIN, Ent. Mitteil., Bd. XV, p. 400 (1926).

**Habitat:** "Formosa" (after KUWAYAMA).

**Distribution:** Taiwan; Honshu, Hokkaido; Siberia; Europe; Transcaucasia.

**Remarks:** This species was described as early as in 1848 by A. FÖRSTER on the specimens which were taken on *Galium verum* [Rubiaceae]. Since that time this species was widely discovered at different quarters and various species of the genus *Galium* were recorded as the food-plants.

**26. *Trioza kuwayamai* ENDERLEIN**

*Trioza Kuwayamai* ENDERLEIN, Ent. Mitteil., Bd. III, p. 235, Fig. 3 (1914); KUWAYAMA, Jr., Ins. World, Vol. XXVI, p. 372 (1922).

*Spanioza Kuwayamai* ENDERLEIN, Ent. Mitteil., Bd. XV, p. 400 (1926).

**Habitat:** Hoozan (after ENDERLEIN).

**Distribution:** Taiwan.

**Genus 15: *Trichohermes* KIRKALDY**

*Trichopsylla* "THOMSON, Opus. Ent., f. VIII, p. 823 (1877)" [nom. praecoc.].

*Trichohermes* KIRKALDY, Entomologist, 1904, p. 280 (1904).

This genus was not recognized by D. L. CRAWFORD (9) in his paper published in 1919 as distinct from *Trioza*, on the grounds that the separation by the pubescent or hirsute dorsum makes a very unnatural and wholly unsatisfactory division. According to my observations, however, the nymphs of this species are quite different in shape from those of the members of the genus *Trioza*, and the conditions of the marginal cells in the fore-wing, hirsute antennae, etc. of this adult are also different from those in the genus *Trioza*. Those differences convince me to make a distinction between these two genera, *Trichohermes* and *Trioza*.

**27. *Trichohermes bicolor* KUWAYAMA**

*Trichohermes bicolor* KUWAYAMA, Trans. Sapporo Nat. Hist. Soc., Vol. III, p. 54, Pl. II-Fig. 2, 8 (1910); OSHANIN, Katal. palaearkt. Hemipt., p. 128 (1912); AULMANN, Psyllid. Cat., p. 59 (1913); TAKAHASHI, Trans. Nat. Hist. Soc. Formosa, Vol. XVII, p. 153 (1927).

*Trioza bicolor* CRAWFORD, Phil. Jour. Sci., Vol. XV, p. 186 (1919); KUWAYAMA, Jr., Ins. World, Vol. XXVI, p. 372 (1922).

**Habitat:** Koshun (after TAKAHASHI).

**Distribution:** Taiwan; Kyushu, Honshu.

**Food Plant:** *Ilex Oldhami* [Aquiforiaceae].

**Remarks:** A few years ago T. UE kindly sent to me some specimens of this species reared on *Ilex Oldhami* at Yasaka, Province of Bungo, Kyushu.

**28. *Trichohermes hyalina* KUWAYAMA**

*Trichohermes hyalina* KUWAYAMA, Trans. Sapporo Nat. Hist. Soc., Vol. III, p. 55, Pl. II-Fig. 9 (1910); AULMANN, Psyllid. Cat., p. 59 (1913); CRAWFORD, Phil. Jour. Sci., Vol. XV, p. 189 (1919); KUWAYAMA, Jr., Ins. World, Vol. XXVI, p. 372 (1922).

**Habitat:** "Formosa" (after KUWAYAMA).

**Distribution:** Taiwan.

**Genus 16: *Stenopsylla* KUWAYAMA**

*Stenopsylla* KUWAYAMA, Trans. Sapporo Nat. Hist. Soc., Vol. III, p. 53 (1910); CRAW-

FORD, Phil. Jour. Sci., Vol. XV, p. 185, p. 203 (1919); CRAWFORD, Phil. Jour. Sci., Vol. XXVIII, p. 39 (1925).

## 29. *Stenopsylla nigricornis* KUWAYAMA

*Stenopsylla nigricornis* KUWAYAMA, Trans. Sapporo Nat. Hist. Soc., Vol. III, p. 54, Pl. II-Figs. 3, 10 (1910); OSHANIN, Katal. palaearkt. Hemipt., p. 128 (1912); AULMANN, Psyllid. Cat., p. 60 (1913); CRAWFORD, Phil. Jour. Sci., Vol. XV, p. 203 (1919); KUWAYAMA, Jr., Ins. World, Vol. XXVI, p. 373 (1922); CRAWFORD, Phil. Jour. Sci., Vol. XXVIII, p. 39 (1925).

**Habitat:** "Formosa" (after KUWAYAMA), Jitsugetsutan (XI, 1921, leg. R. TAKAHASHI).

**Distribution:** Taiwan; Kyushu, Honshu.

**Food Plant:** *Clerodendron trichotomum* [Verbenaceae].

**Remarks:** R. TAKAHASHI kindly sent to me the specimens taken on "Kusagi" (*Clerodendron trichotomum*).

## Literatures Directly Referred to

1. AULMANN, G.: Psyllidarum Catalogus. 92 pp. 1913
2. CRAWFORD, D. L.: American Psyllidae III (Triozinae): Pomona Coll. Jour. Ent., Vol. III, pp. 422-453, Figs. 152-155. 1911
3. ———: American Psyllidae IV (A Partial Revision of Subfamilies): Pomona Coll. Jour. Ent., Vol. III, pp. 480-503, Figs. 157-160. 1911
4. ———: Indian Psyllidae: Rec. Ind. Mus., Vol. VII, Pt. V, pp. 419-435, Pls. XXXIII-XXXV. 1912
5. ———: New Genera and Species of Psyllidae from the Philippine Islands: Phil. Jour. Sci., Vol. VIII, No. 4, Sec. D, pp. 293-301, Pl. I. 1913
6. ———: A Monograph of the Jumping Plant-lice or Psyllidae of the New World: U. S. Nat. Mus., Bul. 85, 186 pp., 30 pls. 1914
7. ———: Ceylonese and Philippine Psyllidae (Homoptera): Phil. Jour. Sci., Vol. X, No. 4, Sec. D, pp. 257-269, Pl. I. 1915
8. ———: Philippine and Asiatic Psyllidae: Phil. Jour. Sci., Vol. XII, No. 3, Sec. D, pp. 163-175, Pl. I. 1917
9. ———: The Jumping Plant Lice of the Palaetropics and the South Pacific Islands, Family Psyllidae, or Chermidae, Homoptera: Phil. Jour. Sci., Vol. XV, No. 2, pp. 139-207, Pls. I-III. 1919
10. ———: Notes on Psyllidae (Homoptera): Ent. News, Vol. XXXI, pp. 69-70. 1920
11. ———: New Indian Psyllidae: Rec. Ind. Mus., Vol. XXVI, Pt. VI, pp. 615-621. 1924
12. ———: The Homopterous Genus *Mesohomotoma* (Psyllidae or Chermidae): Proc. Hawaii. Ent. Soc., Vol. VI, No. 1, pp. 32-35. 1925
13. ———: The Genus *Macrohomotoma* (Psyllidae or Chermidae): Proc. Hawaii. Ent. Soc., Vol. VI, No. 1, pp. 36-39. 1926
14. ———: Notes on Psyllidae: Phil. Jour. Sci., Vol. XXVIII, No. 1, pp. 39-43. 1925
15. ———: Psyllidae (Chermidae): Ins. of Samoa, Pt. II, Hemipt., Fasc. 1, pp. 29-33. 1927

16. ENDERLEIN, G.: Psyllidologica II. H. SAUTER's Formosa-Ausbeute: Psyllidae (Homopt.): Ent. Mitteil., Bd. III, Nr. 7/8, pp. 230-235. 1914
17. ———: Psyllidologica V: Zool. Jahrb., Bd., XLI, Abt. f. Syst., pp. 479-486, Taf. VII. 1918
18. ———: Psyllidologica VI: Zool. Anz., Bd. LII, Nr. 5, pp. 115-122. 1921
19. ———: Psyllidologica VIII: Ent. Mitteil., Bd. XV, Nr. 5/6, pp. 397-401. 1926
20. HUSAIN, M. A. & NATH, D.: The Citrus Psylla (*Dirphorina citri*, KUW.) (Psyllidae: Homoptera): Mem. Dept. Agr. in India, Ent. Ser., Vol. X, No. 2, pp. 5-27, Pls. I-IV. 1927
21. KUWAYAMA, Shigeru: Die Psylliden Japans. I: Trans. Sapporo Nat. Hist. Soc., Vol. II, Pt. 1/2, pp. 149-189, Pl. III. 1908
22. ———: Die Psylliden Japans. II: Trans. Sapporo Nat. Hist. Soc., Vol. III, pp. 53-66, Pl. II. 1910
23. KUWAYAMA, Satoru: Kijirami-rui to Kwaju-engei (The Jumping Plant Lice and Fruit Culture): Engai, Vol. XIII, No. 1, pp. 23-32. 1921
24. ———: Nippon San Kichi Kijirami-rui (A List of the Known Species of Japanese Psyllidae): Konchu Sekai (Ins. World), Vol. XXVI, No. 303, pp. 365-374. 1922
25. ———: Kijirami-rui no Seitai ni kwansuru Nisan no Kwansatsu (Some Ecological Observations on the Psyllidae): Dobutsugaku Zasshi (Zool. Mag.), Vol. XLII, No. 503, pp. 360-362. 1930
26. MAKI, M.: Sedaka-kijirami ni tsuite (On *Macrohratomia g. adiatum* KUWAYAMA): Ins. World, Vol. XIX, No. 215, pp. 267-271, Pls. XIII-XIV. 1915
27. ———: Namiki oyobi Kanshōyō Shokubutsu no Jūyō Gaichū ni kwansuru Chōsa (Investigations on the principal Insect Pests of Avenue and Ornamental Plants): Ringyō Shikenjō Tokubetsu Hōkoku (Special Rep. Forest. Exp. Sta., Gov. Formosa), No. 1, 112+28 pp., 18 pls. (Reference on pp. 36-38, Pl. VIII). 1915
28. ———: Taiwan-san Sōju Gaichū ni kwansuru Chōsa Hōkoku (Report on the Investigations on the Injurious Insects on the Mulberry-tree in Taiwan) (Reference on pp. 65-70, Figs. 7-9, Pl. V). 1916
29. MATSUMURA, S.: Ōyo Konchūgaku (Applied Entomology), Vol. I, 731 pp., 50 pls. (Reference on pp. 368-376, Pl. XIV). 1917
30. ———: Dainippon Gaichū Zensho (Manual of the Injurious Insects in Japan), Vol. I, Revised Ed. 858+32 pp., 34 pls. (Reference on pp. 245-259, Pl. VIII). 1920
31. NITTOBE, I.: Kankitsu Gaichū Chōsa Hōkoku (Report on the Investigations on the Injurious Insects of the Citrus-tree) (Reference on pp. 13, 71-72). 1916
32. RAMAKRISHNA AYYAR, T. V.: List of Psyllidae recorded from India and Ceylon: Rec. Ind. Mus., Vol. XXVI, Pt. VI, pp. 621-625. 1924
33. SASAKI, C.: Kusunoki no Gaichū Chōsa Dai-2-kwai Hōkoku (Second Report on the Investigations on the Injurious Insects of Camphor-tree). (Reference on pp. 1-16). 1907
34. ———: On the Life History of *Trioxa Camphorae* n. sp. of Camphor Tree and its Injuries: Jour. Coll. Agr., Imp. Univ. Tokyo, Vol. II, No. 5, pp. 277-285, Pls. XV-XVI. 1910
35. SHIRAKI, T.: Ippan Gaichū ni kwansuru Chōsa (Investigation on the Injurious Insects in Taiwan): Nōji Shikenjo Tokubetsu-hōkoku (Special Rep. Agr. Exd. Sta.,



- Gov. Formosa), No. 8, 670 pp. (Reference on pp. 132-136). 1913
36. TAKAHASHI, R.: Kijirami no 3-shu to Unka no 1-shu (On three Species of Psyllidae and one Species of Fulgoridae): Trans. Nat. Hist. Soc. Formosa, Vol. XVII, No. 89, pp. 152-156. 1927
37. UICHANCO, L. B.: New Record and Species of Psyllidae from the Philippine Islands, with Descriptions of some Preadult Stages and Habits: Phil. Jour. Sci., Vol. XVIII, No. 3, pp. 259-288, Pls. I-V. 1921

## 摘 要

臺灣産のキジラミ科昆蟲は既知の26種の外、本報文に於て2新種1未記録種を追加し、合計29種を数へることが出来る。是等は4亜科16屬に隸するものであつて、その内1屬は新屬と認むべきものである。今、新屬、新種、未記録種並に食餌植物の判明せる種類を記すに次の如くである。

<i>Leptynoptera sulfurea</i> CRAWFORD	テリハボクノキジラミ テリハボク [オトギリサウ科]
<i>Pauropsylla nigra</i> CRAWFORD	マンゴウキジラミ (未記録種、和名新稱) マンゴウ [ウルシ科]
<i>Paurocephala bifasciata</i> KUWAYAMA, Jr. (sp. nov.)	ケイヌビワキジラミ (新稱) ケイヌビワ [クハ科]
<i>Paurocephala psylloptera</i> CRAWFORD	タイソノクハキジラミ クハ [クハ科]
<i>Togopsylla takahashii</i> KUWAYAMA, Jr. (Gen. et sp. nov.)	トゲキジラミ (新稱) [食餌植物不明]
<i>Mesohomotoma camphorae</i> KUWAYAMA	クスキジラミ ヤマアサ (オホハマボウ) [アフヒ科] クスノキ [クスノキ科]
<i>Mesohomotoma lineaticollis</i> ENDERLEIN	ワタフキキジラミ オホボンテンクワ [アフヒ科]
<i>Homotoma radiatum</i> KUWAYAMA	ヒゲブトキジラミ イヌビワ [クハ科]
<i>Macrohomotoma gladiatum</i> KUWAYAMA	セダカキジラミ ガジュマル [クハ科]
<i>Diaphorina citri</i> KUWAYAMA	ミカンキジラミ ミカン、ゲツキツ [ヘンルウタ科]
<i>Epipsylla albolineata</i> KUWAYAMA	タテスデキジラミ アコウクズマメ [マメ科]
<i>Psylla coccinea</i> KUWAYAMA	ベニキジラミ アケビ [アケビ科]
<i>Trioxa camphorae</i> SASAKI	クストガリキジラミ クスノキ [クスノキ科]
<i>Trichochermes bicolor</i> KUWAYAMA	ネグロキジラミ ナナメノキ [モチノキ科]
<i>Stenopsylla nigricornis</i> KUWAYAMA	ヒゲブトトガリキジラミ ニガキ [クマツヅラ科]