

## A NEW PSYLLID INJURIOUS TO FIG TREES.

By F. LAING.

*Trioza buxtoni*, sp.n.

General colour (in spirit) green with dark brown barring on abdomen. Antennae from the apical half of iv. to tip dark brown to black, basal segments pale brown. Head pale green, except for a black depression between the base of the lateral ocellar elevation and the median line; genal cones medium brown; lateral ocelli pink. Pronotum of the same uniform colour except for a small black area marginally. Dorsulum pale green, with two large semicircular or subtriangular light brown areas medianly anteriorly; mesonotum striated with light brown, one median narrow stripe and two broad lateral ones; mesoscutellum unicolorous or faintly tinged with brown. Legs with the femora darker than tibiae, tarsi and claws black. Abdomen with two median black areas on first segment, with a lateral hollow black area and a small median dark brown patch; the next five segments heavily and continuously barred with black. Abdominal sternites of a medium dark brown. Male genitalia pale brown, female genitalia rather dark brown.

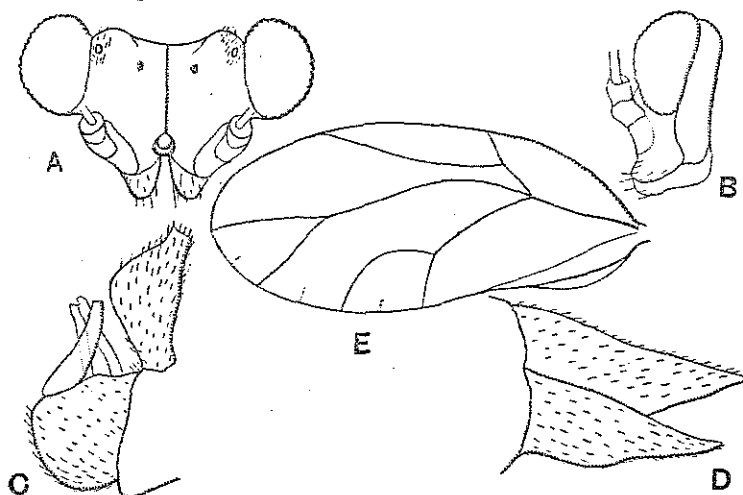


Fig. 1. *Trioza buxtoni*, Laing, sp.n. A, head; B, side view of head; C, genitalia of ♂; D, genitalia of ♀; E, tegmen.

Head (fig. 1, A, B) not as broad as thorax, strongly arcuate on posterior margin, slightly declivous; vertex rather deeply depressed in the centre of each half, lateral ocelli slightly elevated. Genal cones very short, about half the length of the vertex, at first descending almost at right angles to vertex, then porrected almost horizontally, slightly hairy. Antennae about twice the breadth of the head in length. Dorsulum slightly more deep than broad, subtriangular; mesoscutellum subrectangular, with the anterior lateral angle slightly projecting. Hind tibiae without a spur at the base. Tegmen (fig. 1, E) hyaline, rounded at apex, about  $2\frac{1}{2}$  times as long as broad. Genitalia: ♀ almost half the length of the abdomen, the dorsal valve very slightly longer than the ventral; ♂ with the dorsal margin of anal valve more or less straight, the ventral margin deeply convex in the middle (fig. 1, C); forceps wide at the base, tapering to the apex. Length of body, 3.6 mm.; length of tegmen, 3.2 mm.

PALESTINE: Lydda and Jericho, in galls on the leaves of *Ficus carica* (Dr. P. A. Buxton).

Near to *T. thomasi*, Lw., in the shape of the genal cones and the rounded apex of the tegmen, but differing in the coloration. "The gall is thickened, hairy, and projects on the upper side of the leaf. It is a very serious pest, many leaves being completely ruined by it" (Collector's note).

*Present. n° 18 de 1924  
(Série n° 46 de 1910).*

# BULLETIN

OF

## ENTOMOLOGICAL RESEARCH.

ISSUED BY THE IMPERIAL  
BUREAU OF ENTOMOLOGY.

EDITOR: THE DIRECTOR.



---

VOL. XIV.

---

LONDON:  
THE IMPERIAL BUREAU OF ENTOMOLOGY,  
41, QUEEN'S GATE, S.W. 7.  
1923-24.