

there is an elongate mark on the costa near the middle; the second line is very distinct, slightly wavy, oblique, with a rounded projection towards the termen above the middle; there are four large pale brown spots on the terminal area, the two lower spots being confluent; the cilia are cream-coloured with a double series of brown bars. The hind-wings are greyish-ochreous with faint lunule and terminal shading.

I discovered this species in January, 1906, amongst the large clumps of *Aspidium aculeatum* which constitute such a conspicuous feature in the Routeburn Valley at the head of Lake Wakatipu. It has recently been rediscovered by Mr. Philpott, who found it in some numbers on the Takitimu Mountains, Southland, at elevations between 2,000 and 3,000 feet above the sea-level. This makes the 88th distinct species of *Scoparia* known in New Zealand.

Hillview, Karori,
Wellington, New Zealand:
September 9th, 1913.

A NEW SPECIES OF *PSYLLOPSIS*, F. LOEW, FROM BRITAIN.

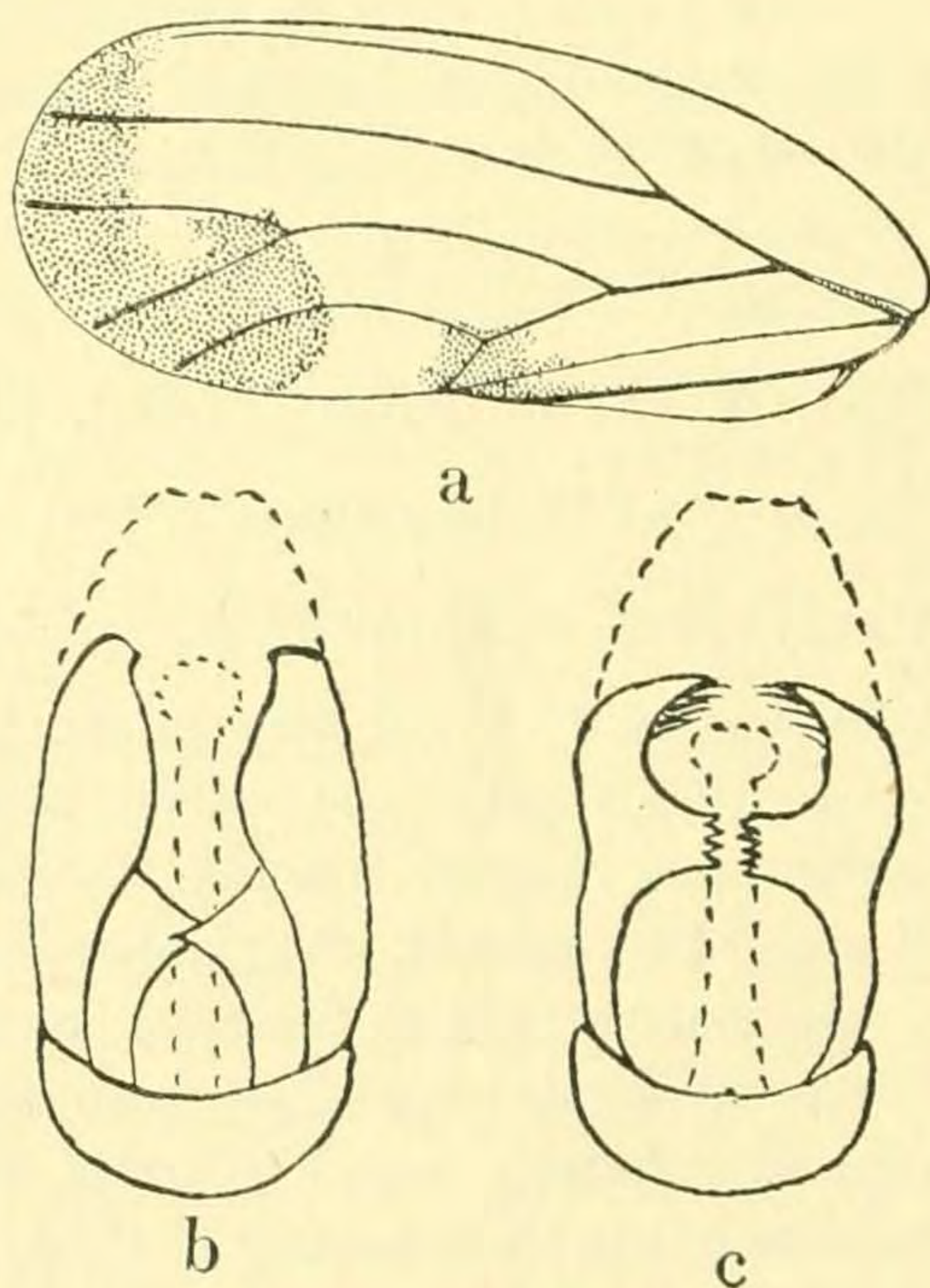
BY JAMES EDWARDS, F.E.S.

PSYLLOPSIS *DISTINGUENDA*, *sp. nov.*

Very similar to *P. fraxini*, L., but a little larger, the black band on the elytra broader, its inner edge regular and sharply defined. Forceps, in the lateral aspect, in the form of an irregular triangle attached by the apex, the free angles rounded and somewhat inflexed, their inner surface, as well as the space between them, roughened with black tubercles; on the middle of the inner side there is a wide submembranous wing which is subequal in width from the base to the middle, where it forms a large triangular tooth, and from thence upward it rapidly becomes lost in the substance of the organ.

I am indebted to Mr. Champion for the opportunity to describe this interesting insect; he took five examples on June 21st, 1913, in the New Forest, together with several *Metatropis rufescens*, by sweeping *Circæa lutetiana* and other low plants, but did not notice any ash trees in the immediate vicinity. The latter circumstance is noteworthy because there is reason to believe that all the species of *Psyllopsis* feed on some kind of ash: *Fraxinus excelsior* and other species of ash are the food-plants of *P. fraxini*, L., and *P. fraxinicola*, Foerst., the only species of which the early stages are at present known; *P. meliphila*, Loew, was found by Then at Lees, in Krain, on *Fraxinus*, and Reuter thought that his specimens of *P. discrepans*, Flor, from Ispois, near Abo, were found on *Fraxinus*.

In *P. fraxini* the forceps in the lateral aspect are in the form of an irregular triangle attached by the apex, the free angles are rounded and inflexed, on the inner side the front one has some long hairs and the hinder one a few black spinose teeth; on the basal half of the inner side near the middle there is a feeble simple ridge. *Psylloopsis meliphila* is an entirely pale species like *P. fraxinicola*; the forceps, in the lateral aspect, are about half as high as the genital plate, the hinder edge is feebly convex and the front edge is produced into a large rounded lobe: *P. discrepans* is a strongly marked insect closely resembling *P. fraxini* and *P. distinguenda*, but is readily known by the form of the forceps, which, in the lateral aspect, have the appearance of a parallelogram supported by a very short and thin stalk.



a. *Psylloopsis distinguenda*, elytron.

b. ditto cephalad aspect of male genital segment (diagrammatic).

c. *Psylloopsis fraxini*, ditto

Colesborne, Cheltenham :

October 14th, 1913

Second Series, No. 287.] NOVEMBER, 1913. [PRICE 6d. NET
[No. 594.]

THE
ENTOMOLOGIST'S
MONTHLY MAGAZINE.

EDITED BY

G. C. CHAMPION, F.Z.S. J. E. COLLIN, F.E.S.

W. W. FOWLER, D.Sc., M.A., F.L.S.

R. W. LLOYD, F.E.S. G. T. PORRITT, F.L.S.

J. J. WALKER, M.A., R.N., F.L.S.

SECOND SERIES—VOL. XXIV.

[VOL. XLIX.]

“J’engage donc tous à éviter dans leurs écrits toute personnalité, toute allusion dépassant les limites de la discussion la plus sincère et la plus courtoise.”—*Laboulbène*.

LONDON :

GURNEY & JACKSON (MR. VAN VOORST'S SUCCESSORS),
33, PATERNOSTER ROW, E.C.

SOLD IN GERMANY BY FRIEDLÄNDER UND SOHN, BERLIN.

NAPIER, PRINTER, SEYMOUR STREET, EUSTON SQUARE.

