

Estratto dal Bollettino della Società Entomologica Italiana**Anno LXI, N. 2 — 28 Febbraio 1929, VII****DESCRIPTION OF AN APPARENTLY NEW SPECIES OF APHALARA**

(PSYLLIDAE)

BY F. LAING, M. A., B. SC.

Included in a small collection of Psyllidae submitted to me for determination by Mr. C. Menozzi, there was an apparently undescribed species of *Aphalara*, a diagnosis of which follows. It has given me great pleasure to name it after this distinguished Italian scientist.

***Aphalara menozzii* sp. n.**

Antennae pale yellowish, with the apical half of segments four and six, and from the distal half of eight to the terminus, dense black. Head reddish, admixed with fuscous, two subcircular spots lying slightly internal to the antennal bases, and a short linear spot adjacent to postocelli, sordid white, margined with black. Prothorax concolorous with head, with a pair of median spots and the lateral margins, whitish. Praescutum and scutum of a brighter red than head and prothorax, the former with a dark reddish median area and usually two paler or almost whitish submedian stripes lying posteriorly and converging

slightly anteriorly; markings on scutum ill defined, usually consisting of a median and a submedian dark longitudinal stripe and one or two blackish spots on the anterior border; a wide area on margin yellowish white. Scutellum with median area reddish, divided from the yellowish white anterior lateral angles by a black stripe. Postmetascutellum very similar in coloration to mesoscutellum. Dorsum of abdomen reddish with indefinite fuscous areas, the posterior segments usually black; genitalia in

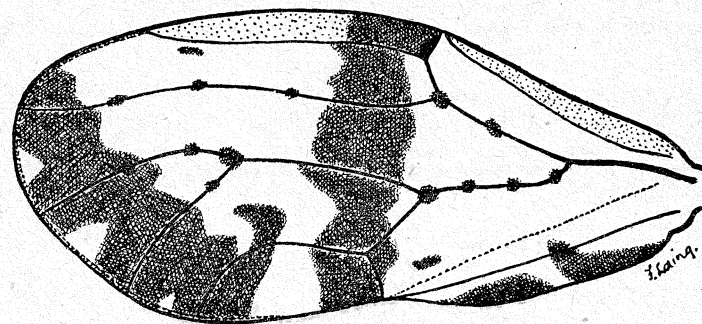


Fig. 1. Elytron of *Aphalara menozzii* n. sp.

both sexes black. Elytron transparent, with two well defined transverse fuscous bands, one median and the other lying along the apical margin broken in cells 3, 4, and 5 by a small triangular, transparent area; two fuscous areas on anal margin; nervures with conspicuous black markings (see fig. 1). Wing transparent, unmarked. Legs pale yellowish white with a little fuscous towards apex of femur and base of tibia.

Antennae short, robust, about one and one-half times breadth of head; head slightly deflexed, the praescutum, pronotum and head lying more or less in line; each half of vertex subquadrate, depressed medially and frontally, leaving the area around post-ocelli and along posterior margin elevated; breadth of eyes approximately one-fourth width of vertex; praescutum biconvex, the median part of hind margin straight, the width one-fourth the breadth; scutum with the front margin slightly concave, the width two-fifths the breadth. Elytron not quite twice as broad as long, the nervures conspicuous and elevated well above the membrane. Length 1 mm.; length of elytron 1.3 mm. Liguria: Sanremo, 27-VII-1925 (C. Menozzi).

Type and paratype returned to Dr. Menozzi; one paratype in the British Museum.

This species is most nearly related to *A. exilis* Web.-Mohr, but the distinctive markings on the elytra should render it easy of identification. (1)

(1) L'*Aphalara menozzii* Laing, fu da me raccolta, parecchio tempo fa, su delle piante di Lentisco (*Pistacia lentiscus* L.) che si trovano sulle colline dei dintorni di Sanremo.

Essa colla sua puntura fa accartocciare una parte del lembo delle foglioline di tali piante formando una specie di cilindretto, più o meno regolare, entro a cui avviene lo sviluppo delle larve. Tali formazioni possono essere facilmente scambiate per le galle dell'afide *Aploneura lentisci* Pass. che vive pure sul Lentisco, ma è raro però trovare su una medesima pianta embedue gli insetti.

Mi riserbo, quando avrò completato le mie osservazioni, di pubblicare la biologia di questa nuova specie di Psillide e di dare la descrizione dell'ovo e degli stadi postembrionali di esso.

C. MENOZZI